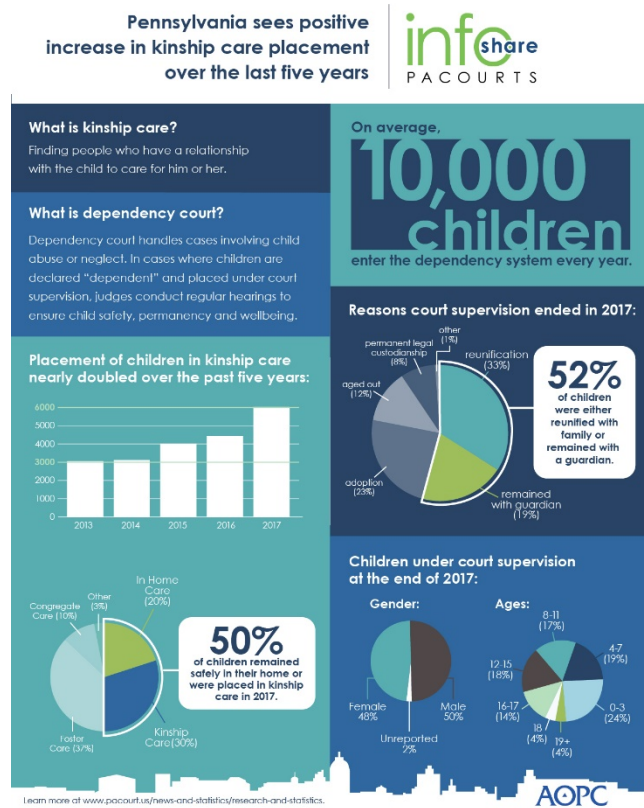


Infographic for Immediate Release
May 10, 2019

Pennsylvania sees a positive increase in kinship care placement over the last five years

HARRISBURG — Pennsylvania court data shows that over the last five years, the placement of children in kinship care has **nearly doubled**. The Office of Children and Families in the Courts (OCFC) tries their best to place children in the care of someone they know and have a relationship with (kinship care) before resorting to other placements – this could be a relative, coach, family friend, etc.

The infographic below highlights key dependency court data including the average number of children entering the dependency system per year, demographics of the children and placement trends. [Download a high-resolution version](#) of the graphic.



PA Courts InfoShare is a monthly product of the Administrative Office of Pennsylvania Courts (AOPC) that visually highlights the work of the courts with interesting data and statistics obtained through the judiciary's case management systems, interactive dashboards and other research. Reproduction is permissible with source cited.



##

Media contact: [Kimberly Bathgate](#), 717-231-3331