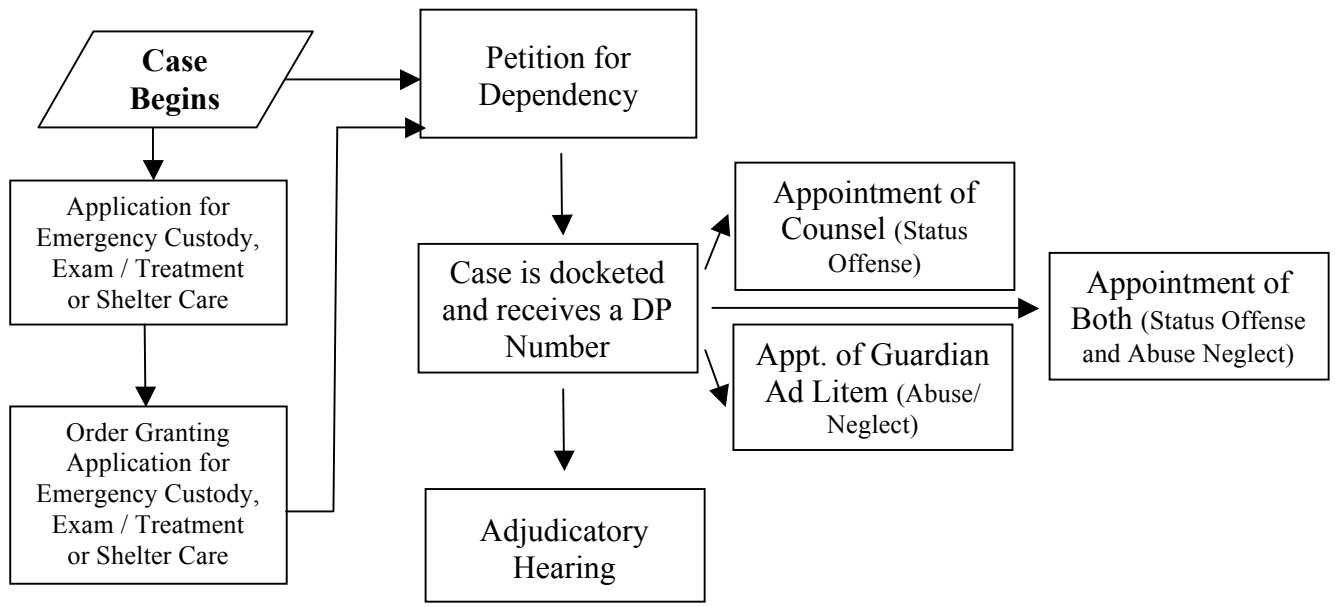
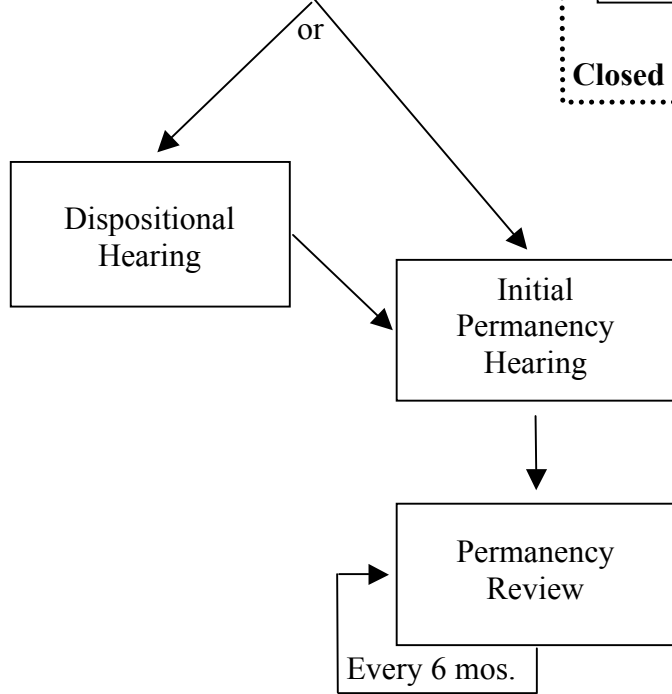
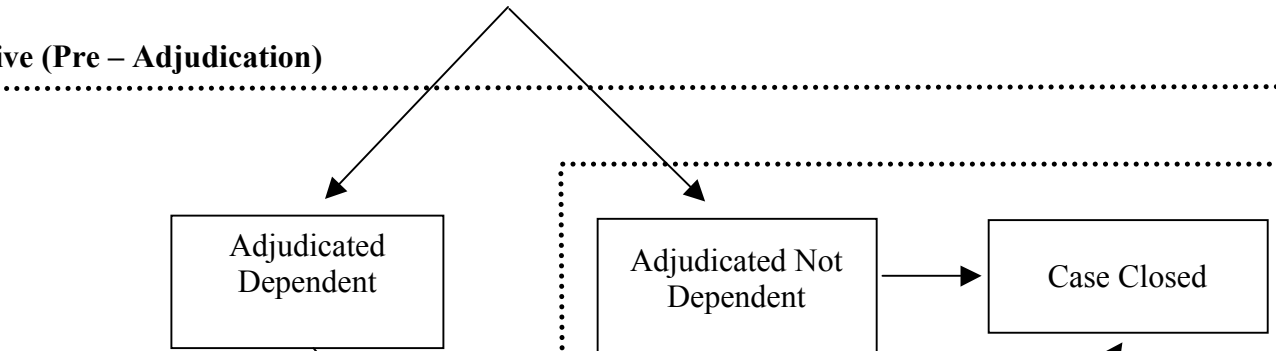


Generic Life Cycle of a Dependency Case



Active (Pre – Adjudication)



Closed

- Remained with guardian
- Reunified with guardian
- Placed with ready and willing parent not previously identified by the agency
- Adopted
- Placed in the custody of a Permanent Legal Custodian
- Placed in the physical and legal custody of a fit and willing relative
- Placed in another living arrangement intended to be permanent
- Adjudicated delinquent and children and youth services no longer needed
- Emancipated by the court
- Reached 18 years of age
- Died due to natural causes or negligence
- Court in another PA County or State has accepted jurisdiction

Active/Adjudicated Dependent